



Nicklaus  
Children's  
Hospital

Where Your Child Matters Most™

# Kenneth C. Griffin Surgical Tower

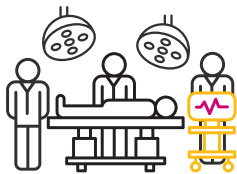


The Kenneth C. Griffin Surgical Tower elevates Nicklaus Children's Hospital's surgical care offerings in an environment that caters to the patient experience combined with leading-edge technology to ensure children and adolescents don't have to leave South Florida for expert pediatric surgical care.

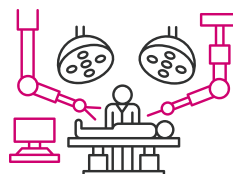
The five story, 131,000 square-foot facility is equipped with 12 advanced and fully integrated operating suites used to perform acute to the most complex pediatric surgeries. Pediatric surgical offerings include trauma care, surgical cancer interventions, pediatric plastic and reconstructive surgeries including cleft lip-and-palate, orthopedic and spine, brain and heart surgeries.



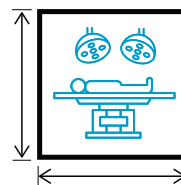
**131,000**  
sq.ft. Facility



**16,000+**  
Surgeries Per Year  
(including Ambulatory Surgery Center)



**12**  
New Advanced  
Operating Suites



**800+**  
sq.ft. Per  
Operating Room



**18**  
Inpatient Rooms for  
Surgical Patients



# Kenneth C. Griffin Surgical Tower



**1<sup>st</sup> floor:** Registration and access



**2<sup>nd</sup> floor:** Pre-and post-operative suites, 2 anesthesia induction rooms, and 6 operating rooms dedicated to brain, heart, orthopedic spine, pediatric trauma, and plastic surgery.



**3<sup>rd</sup> floor:** Pre-and post-operative suites, 2 anesthesia induction rooms, and 6 operating rooms dedicated to ENT, oncology, ophthalmology, orthopedics, pediatric general surgery, and urology.



**4<sup>th</sup> floor:** Sterile processing and surgical administrative offices



**6<sup>th</sup> floor:** Dedicated unit with 18 inpatient rooms for surgical patients.

## Highlights

### Patient-and-Family Friendly Amenities

- Spacious pre- and post- surgical spaces with individual rooms
- Up-to-the-minute texting platform for surgical updates
- Virtual reality tools to keep patients calm and entertained pre- and post- surgery
- Immersive technology to display videos and reduce anxiety giving patients a theater-like experience
- Enhanced registration process
- Convenient meal purchasing stations
- Families are able to stay with their child as they undergo anesthesia.
- Covered entrance with accessible drop-off and pick-up area for families

### Surgical Technologies

- The Griffin Surgical Tower has connecting walkways to the cardiac intensive care unit, the intraoperative MRI suite, and the patient observation unit (3 south).
- The facility is equipped with O-Arm™ surgical imaging system to support advanced imaging for pediatric brain and spine surgeries
- Our surgeons utilize virtual reality tools for surgical planning
- We have acquired the Zeiss® microscope robotic visualization system
- Our teams utilize the DaVinci® robotic system for minimally invasive surgery
- Our new surgical suites are equipped with intraoperative monitoring/streaming for surgical education
- The facility now has the latest technologies for surgical sterilization and automated carousel equipment storage for efficiencies

## About the Donor: Kenneth C. Griffin

In recognition of a generous \$25 million gift, the tower is named after Citadel founder and CEO Kenneth C. Griffin. Mr. Griffin's donation also helps fund Nicklaus Children's four major institutes advancing pediatric care related to the brain, cancer and blood disorders, the heart, and orthopedics.



Where Your Child Matters Most™